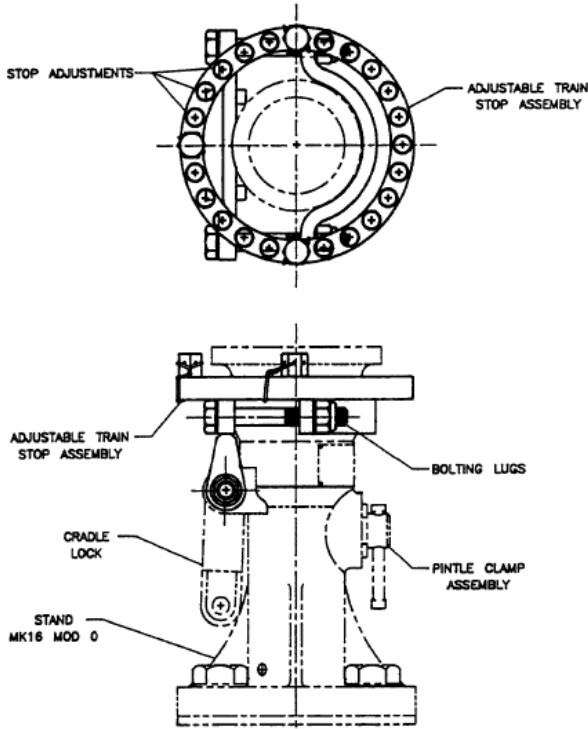


MK16 MOD9 Tripod and Stand



MK16 MOD8 Stand

MK16 MOD0 Tripod

The MK16 MOD 9 Stand Assembly consists of the MOD 0 Tripod and MOD 8 stand.

The tripod is manufactured using corrosive resistant stainless steel (316 CRES) and has a powder coat finish.

The stand has a powder finish and is fabricated from naval bronze alloy (C86200).

Supplied with adjustable train stops (standard) or cut to a particular train stop setting.

